

# PRIMARY AIR <sup>by</sup> AIR LIFT

## Kneeling Accessory User's Guide

---

Kneeling your truck provides a lowered height for easy loading and unloading and can be done from the convenience of your truck cab. This Users Guide provides useful information regarding the function and use of the kneeling accessory. Following this guide will assure safety and long life to Primary Air and to your truck.

### How Primary Air Kneeling Works

With the kneeling switch in the **up** position, Primary Air functions in the fully automatic mode, adding or exhausting air as the load requires (refer to the Primary Air Users Guide). With the kneeling switch in the **down** position, the air will be released from the air springs and the compressor will not turn on. Your truck will kneel down to the bump stops. Flipping the switch back to the **up** position turns the system back to the automatic mode, the compressor and exhaust solenoid will follow the signal from the electronic height sensor and your truck will return to normal ride height. The system will not function without the ignition key turned on.

### Trailer Hitch-Up and Disconnect

#### ***For Goose-Neck and Fifth Wheel Hitches:***

Kneel the truck down before backing up the vehicle and connecting to the hitch. After hitching up, flip the kneeling switch back to automatic (up) and wait for your truck to return to ride height before driving. When disconnecting from the hitch, kneel the truck first, disconnect the hitch per the hitch manufacturers directions and move the vehicle away from the hitch. Flip the kneeling switch back to automatic (up) and wait for your truck to return to ride height before driving.

#### ***For Receiver Style Hitches with Weight Distribution Bars:***

Make all adjustments to your bars while the truck is at normal ride height. Because Primary Air adjusts the height automatically, it will be necessary to find the correct bar adjustment by driving and adjusting.

### Warnings:

- ***Always follow the hitch manufacturers directions for hitching up and disconnecting.***
- ***Primary Air and the kneeling accessory do not replace the need for weight distribution bars.***
- ***Always make sure that people, pets and obstacles are clear of your truck before kneeling.***

### Cautions:

***Never drive with your truck kneeled. Doing so may cause damage to the air springs and drive train of your truck. If using kneeling for trailer hitch-up and disconnect, always kneel completely before hitching-up or disconnecting. This prevents damage from the truck lifting when pulling away from the hitch.***

### Notes:

- ***The system will not function unless the ignition switch is on.***
- ***It takes 25 seconds for the height sensor to react.***

**Please read these instructions completely before proceeding with installation**

**RECOMMENDED COMPRESSOR LOCATIONS**

**Important**

LOCATE COMPRESSOR IN DRY, PROTECTED AREA ON VEHICLE. DIRECT SPLASH OR EXCESSIVE MOISTURE CAN DAMAGE THE COMPRESSOR AND CAUSE SYSTEM FAILURE.

Disclaimer: If you choose to mount the compressor outside the vehicle please keep in mind the compressor body must be shielded from direct splash and the intake should be snorkeled inside the vehicle. If the compressor does not include a remote mount air filter or if mounting the compressor outside the vehicle, make sure to orient the compressor intake filter so that all moisture can easily drain.

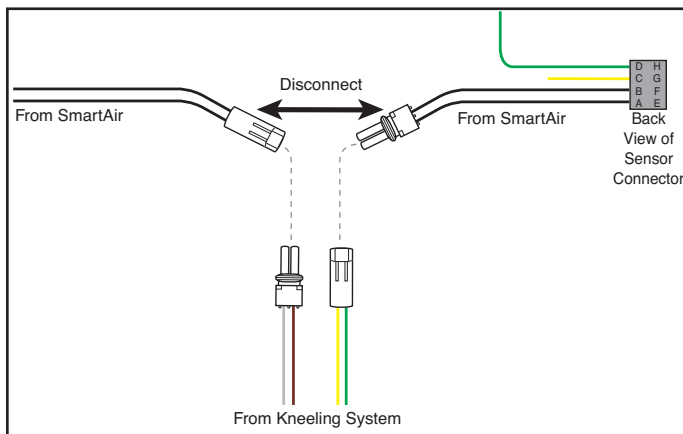
**Please also remember...**

- To avoid high heat environments
- To avoid mounting the compressor under the hood.
- To check to be sure the compressor harness #2 will reach the compressor and connect to harness #1.
- The compressor can be mounted in any position — vertical, upside down, sideways, etc. (please refer to the instruction manual).

**Installing your Kneeling Option Kit**

1. Disconnect the kneeling option connector from the installed SmartAir system that connects one set of black wires to the other.

**NOTE: These are located by the compressor and solenoid (Figure 1).**

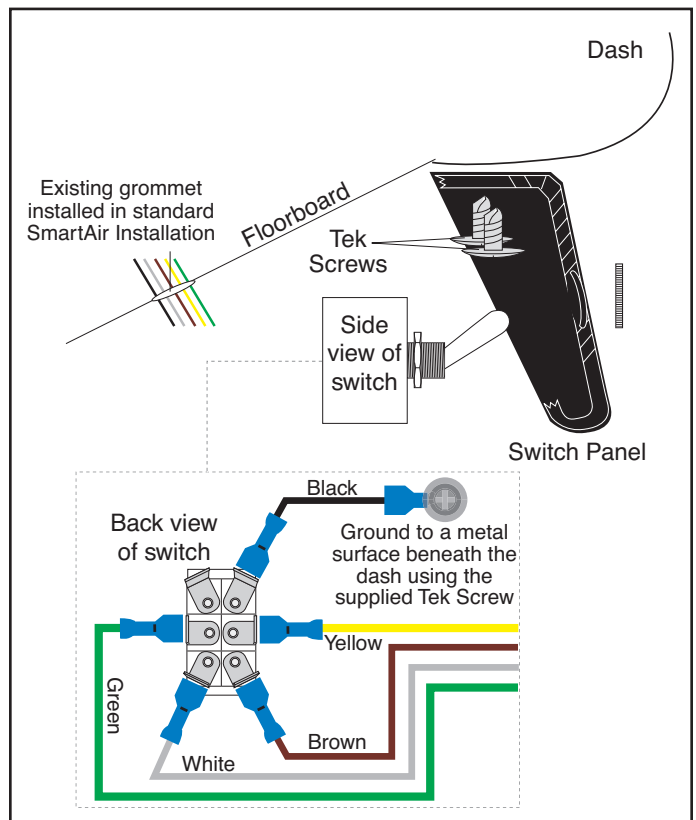


**Figure 1**

2. Plug the connectors of the supplied kneeling harness into the connectors just disconnected from the original SmartAir system.
3. Route the other end of the kneeling harness wires up into the cab through the existing grommet and over to the area where the panel will be mounted (Figure 2).

**NOTE: Use the supplied tie straps to fasten the wires to the frame.**

4. Once the wires are in the cab, strip the ends of the kneeling harness wires and the supplied black wire. Crimp the female terminal ends and the ground terminal in place.
5. Attach the wires to the supplied switch as shown in Figure 2.
6. Mount the supplied switch panel in a convenient location under the dash and attach the switch to the panel (Figure 2).



**Figure 2**